

# New RG-ES0/ES100 Series Unmanaged Switch Family

DATASHEET

[Explore More](#)

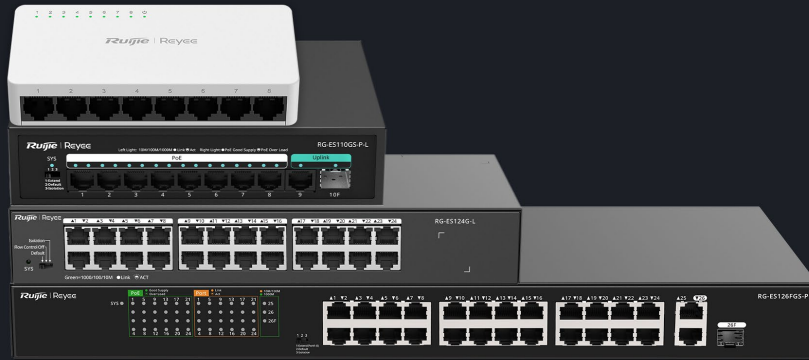


## Highlights

- Visible on Ruijie Cloud Even Unmanaged
- Intelligent and Secure CCTV Network
- Intelligent PoE Management
- High-Quality Design

# Highlight Features

## New RG-ES0 RG-ES100 Series Unmanaged switch



Plug & play



Max. 30W on Each Port



3 Years Warranty



Energy Saving

## Unmanaged Switch, Which Is Visible on Ruijie Cloud\*

\*If an unmanaged switch needs to be visualized on Ruijie Cloud, at least one managed switch needs to be deployed on the same network



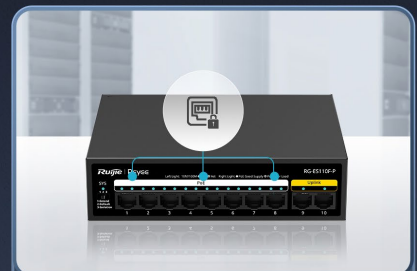
## Intelligent and Secure CCTV Network



Watchdog



Extend Mode



Port Isolation



PoE Auto Recovery



250 Meters Transmission



Flexible Extend mode



Higher security

# Highlight Features

## Intelligent PoE Management

Fit for various powered devices up to 30W

Wall AP  
802.3af

IP Camera  
802.3af

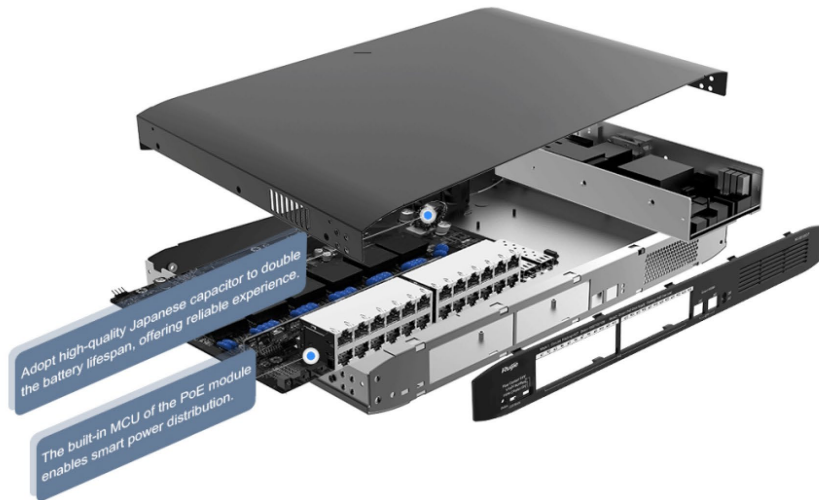
Ceiling AP  
802.3at

IP PTZ Camera  
802.3at

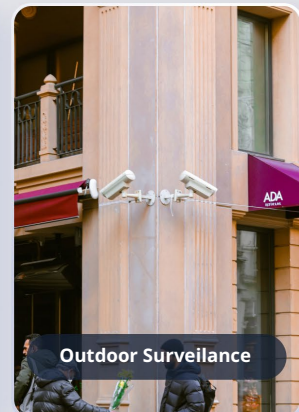


## Better Quality Design

Strict standards in PCB design and component selection



## Designed for Various Scenarios



# Specifications

Specifications	RG-ES05F	RG-ES08F	RG-ES05G-L	RG-ES08G-L	RG-ES116G-L	RG-ES124G-L	RG-ES106F-P
<b>Basic</b>							
Total Number of RJ45 Ports	5	8	5	8	16	24	6
Number of 10/100BASE-T Ports	5	8	N/A	N/A	N/A	N/A	6
Number of 10/100/1000BASE-T Ports	N/A	N/A	5	8	16	24	N/A
Number of PoE/PoE+ Ports	N/A	N/A	N/A	N/A	No	No	4
Max. PoE Power Budget	N/A	N/A	N/A	N/A	No	No	54W
PoE Power Pins	N/A	N/A	N/A	N/A	No	No	1 2+, 3 6-
Extend Mode (Long-Range Transmission)	N/A	N/A	N/A	N/A	No	No	Yes
Layer	L2	L2	L2	L2	L2	L2	L2
Switching Capacity	1Gbps	1.6Gbps	10Gbps	16Gbps	32Gbps	48Gbps	1.2Gbps
Forwarding Rate	0.744Mpps	1.19Mpps	7.44Mpps	11.9Mpps	23.8Mpps	35.7Mpps	0.89Mpps
Buffer Size	768Kbits	768Kbits	1Mbits	1.5Mbits	4.1Mbits	4.1Mbits	768Kbits
Flash Memory	N/A	N/A	1MB	1MB	4MB	4MB	2MB
MAC Address Table Size	N/A	N/A	N/A	N/A	8K	8K	2K
Dimensions (W x D x H)	85*52*23.5m	124*60*24m	85*52*23.5m	124*60*24m	280*125*43.6mm	280*125*43.6mm	166*132.6*43mm
Net Weight	49.5g	82g	57g	104g	1.049kg	1.120kg	0.65kg
Mean Time Between Failure (MTBF)	>200K	>200K	>200K	>200K	>200K	>200K	>200K
Safety Compliance	EN 62638-1	EN 62638-1	EN 62638-1	EN 62638-1	EN 62638-1	EN 62638-1	EN 62638-1
Warranty	3	3	3	3	3	3	3







# Specifications

Specifications	RG-ES110F-P	RG-ES110FG-P	RG-ES110GS-P-L	RG-ES118FGS-LP	RG-ES118GS-P-L	RG-ES126FGS-P	RG-ES126FGS-LP
<b>Basic</b>							
<b>Total Number of RJ45 Ports</b>	10	10	9	18	16	26	26
<b>Total Number of Optical Ports</b>	N/A	N/A	1	2	2	1	1
<b>Number of Combo Ports</b>	N/A	N/A	N/A	2	N/A	1	1
<b>Number of 1 Gbps Optical Ports (SFP)</b>	N/A	N/A	1	2	2	1	1
<b>Number of 10/100BASE-T Ports</b>	10	8	N/A	16	N/A	24	24
<b>Number of 10/100/1000BASE-T Ports</b>	N/A	2	9	2	18	2	2
<b>Number of PoE/PoE+ Ports</b>	8	8	8	16	16	24	24
<b>Max. PoE Power Budget</b>	110W	110W	120W	120W	247W	370W	180W
<b>PoE Power Pins</b>	1 2+, 3 6-	1 2+, 3 6-	1 2+, 3 6-	1 2+, 3 6-	1 2+, 3 6-	1 2+, 3 6-	1 2+, 3 6-
<b>Extend Mode (Long-Range Transmission)</b>	Yes	Yes	Yes	Yes	Yes	Yes	Yes
<b>Layer</b>	L2	L2	L2	L2	L2	L2	L2
<b>Switching Capacity</b>	2.0Gbps	5.6Gbps	20Gbps	7.2Gbps	36Gbps	8.8Gbps	8.8Gbps
<b>Forwarding Rate</b>	1.48Mpps	4.17Mpps	14.8Mpps	5.35Mpps	26.8Mpps	6.55Mpps	6.55Mpps
<b>Buffer Size</b>	4Mbits	4Mbits	1.5Mbits	4Mbits	4.1Mbits	4Mbits	4Mbits
<b>Flash Memory</b>	2MB	2MB	2MB	4MB	4MB	4MB	4MB
<b>MAC Address Table Size</b>	8K	8K	4K	8K	8K	8K	8K
<b>Dimensions (W x D x H)</b>	166*132.6*43 mm	166*132.6*43 mm	190*150*43 mm	440mm*214.9mm*44mm	440mm*214.9mm*44mm	440mm*214.9mm*44mm	440mm*214.9mm*44mm
<b>Net Weight</b>	0.97kg	0.97kg	0.97kg	2.46kg	2.57kg	2.62kg	2.64kg



Specifications	RG-ES110F-P	RG-ES110FG-P	RG-ES110GS-P-L	RG-ES118FGS-LP	RG-ES118GS-P-L	RG-ES126FGS-P	RG-ES126FGS-LP
<b>Mean Time Between Failure (MTBF)</b>	>200K	>200K	>200K	>200K	>200K	>200K	>200K
<b>Safety Compliance</b>	EN 62638-1	EN 62638-1	EN 62638-1	EN 62638-1	EN 62638-1	EN 62638-1	EN 62638-1
<b>Warranty</b>	3	3	3	3	3	3	3
<b>Layer2 features</b>							
<b>Jumbo Frame Length (MTU)</b>	2048 Bytes	2048 Bytes	9216 Bytes	2048 Bytes	10000 Bytes	2048 Bytes	2048 Bytes
<b>Flow Control</b>	Yes	Yes	Yes	Yes	Yes	Yes	Yes
<b>Port Isolation / Protected Port</b>	Yes	Yes	Yes	Yes	Yes	Yes	Yes
<b>PoE Watchdog</b>	Yes	Yes	Yes	Yes	Yes	Yes	Yes
<b>Hardware Specifications</b>							
<b>DIP Switch</b>	Extend mode: The rate of Ports 1 to 8 is reduced to 10 Mbps, but the maximum transmission distance can be up to 200 meters (Cate5e cables required).Flow Control On Default mode: All ports can communicate with each other.Flow Control On Isolation mode: Ports 1 to 8 cannot communicate with each	Extend mode: The rate of Ports 1 to 8 is reduced to 10 Mbps, but the maximum transmission distance can be up to 200 meters (Cate5e cables required).Flow Control On Default mode: All ports can communicate with each other.Flow Control On Isolation mode: Ports 1 to 8 cannot communicate with each	Extend mode: The rate of Ports 1 to 8 is reduced to 10 Mbps, but the maximum transmission distance can be up to 200 meters (Cate5e cables required).Flow Control On Default mode: All ports can communicate with each other.Flow Control On Isolation mode: Ports 1 to 8 cannot communicate with each other, but	Extend mode: The rate of Ports 1 to 8 is reduced to 10 Mbps, but the maximum transmission distance can be up to 200 meters (Cate5e cables required).Flow Control On Default mode: All ports can communicate with each other.Flow Control On Isolation mode: Ports 1 to 16 cannot communicate	Extend mode: The rate of Ports 1 to 8 is reduced to 10 Mbps, but the maximum transmission distance can be up to 200 meters (Cate5e cables required).Flow Control On Default mode: All ports can communicate with each other.Flow Control On Isolation mode: Ports 1 to 16 cannot communicate with each other, but	Extend mode: The rate of Ports 1 to 8 is reduced to 10 Mbps, but the maximum transmission distance can be up to 200 meters (Cate5e cables required).Flow Control On Default mode: All ports can communicate with each other.Flow Control On Isolation mode: Ports 1 to 24 cannot communicate	Extend mode: The rate of Ports 1 to 8 is reduced to 10 Mbps, but the maximum transmission distance can be up to 200 meters (Cate5e cables required).Flow Control On Default mode: All ports can communicate with each other.Flow Control On Isolation mode: Ports 1 to 24 cannot communicate with each other, but







**Ruijie | RYCE**

 **Redefine your easy network**

---

**Copyright ©2000-2024 Ruijie Networks Co., Ltd. All rights reserved.**

No part of this document may be reproduced or transmitted in any form or any means without prior written consent of Ruijie Networks Co., Ltd.

**Notice**

This content is applicable only to regions outside the China mainland. Ruijie Networks Co., Ltd. reserves the right to interpret this content.

The information contained herein is subject to change without notice. Nothing herein should be construed as constituting an additional warranty. Ruijie Networks Co., Ltd. shall not be liable for technical or editorial errors or omissions contained herein.



Ruijie Networks Co., Ltd.

**Official Website:** <https://www.ruijie.com>